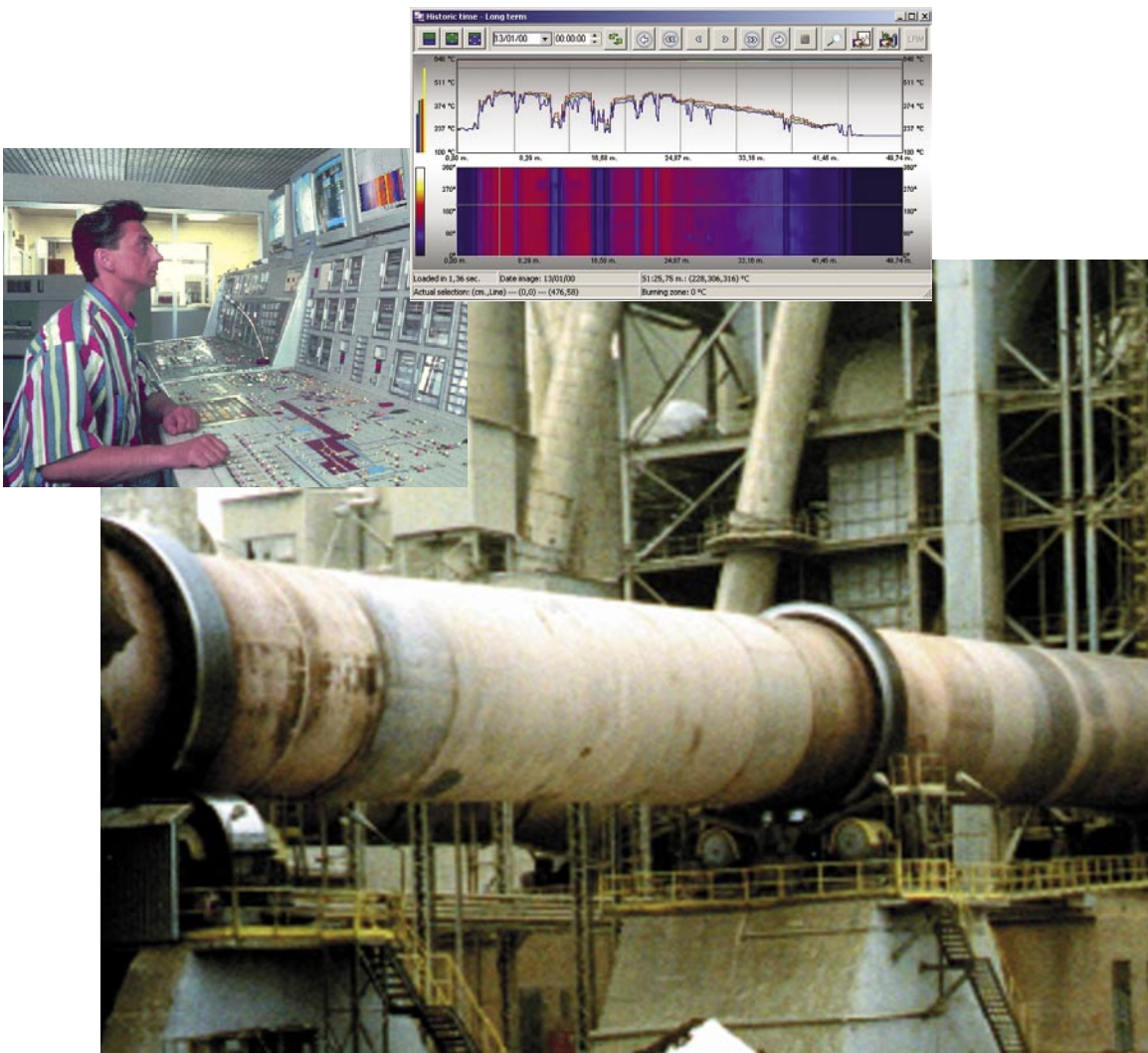


CS200

Process Imaging System for Kiln Shell Temperature Monitoring



The CS200 System provides real time kiln shell temperature analysis.



Kiln Shell Scanning System

Specifically designed for kiln monitoring, the CS200 is a fully integrated solution that monitors rotary kilns to detect hot spots and avoid costly damage and unscheduled downtime. Optional, yet fully-integrated, accessories extend the capability to include shadow sensing, burning zone monitoring, tire slip and fan control.

Benefits

- Detect hotspots due to refractory loss, damage or wear
- Detect abnormal operating conditions such as faulty flame position and shape
- Optimize and manage kiln maintenance
- Extend operational life of kiln and refractory
- Completely integrated monitoring of key kiln parameters

Features

- Map entire kiln surface and display in real-time thermogram format
- "One brick" resolution hot spot detection in shadowed areas
- Fail-Safe "hot-spot" alarm outputs (PC independent)
- Interface with other programs via OPC
- Refractory Management software
- Modular design simplifies installation and service
- All data, alarms and errors stored and accessible in one common database
- Multiple level security settings

Options

- Live Ring Migration—tire slip monitoring
- Fan Control
- Burning Zone Monitor Package
- Shadow Sensor Package

CS200 Provides Complete Kiln Monitoring Capability

Kiln shell temperatures are monitored along the entire length of the kiln providing an essential indication of the health of the refractory material. Temperature data for areas "shadowed" from the main sensor can be provided by individual point sensors and seamlessly integrated into one complete thermal image. Optional burning zone sensor and tire slip monitoring can be integrated into the system so that all information is displayed on one screen in the control room and all events are permanently linked in an extremely versatile historical data database.



Rugged & Reliable for Continuous Kiln Shell Monitoring

The MP50 is the most widely used infrared linescanner worldwide. With thousands of installations, hundreds of them in kiln applications from the desert to the rainforests, it has set the standard for reliability in extremely demanding environments. Featuring state-of-the-art optics, advanced microprocessor electronics, and a high-reliability motor, the MP50HR combines signal processing, data storage and data communications into one integral unit.

To insure reliable operation in even the harshest kiln environments, the MP50HR linescanner is designed with a rugged cast aluminum housing, which in turn is mounted in a robust stainless steel protective housing with provisions for air-purge and water cooling.

The protective housing includes an adjustable mounting bracket to aim the scanner along the kiln axis, a mounting rail permitting fast scanner installation, quick-disconnect fittings for air purge and water cooling and an easily replaced viewing window.

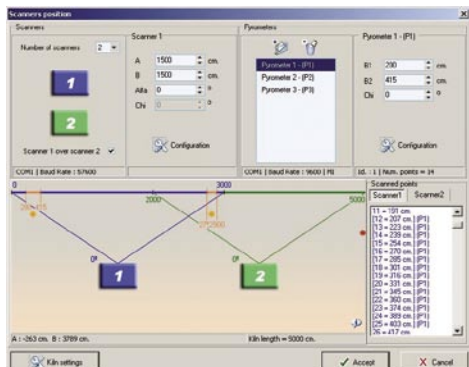


Linescanner in protective housing is mounted on top of a tower.

DataTemp CS200 Software

User-friendly DataTemp CS200 Windows® Software Provides Easy Configuration and Startup

The CS200 System software runs on conventional PC's using standard COM ports. The graphic user interface is designed specifically for kiln applications making it simple to set-up and use, with little operator training required. With the available options and accessories, the CS200 expands to become a comprehensive kiln monitoring tool.



Rapid Set-up

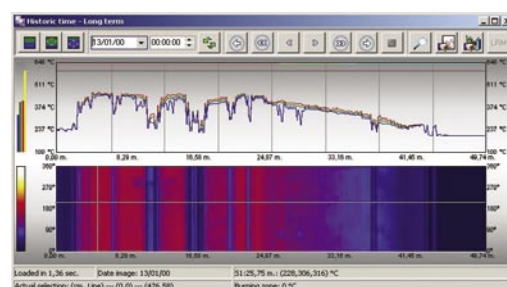
Using the intuitive set-up screens, the operator simply enters the physical dimensions of the kiln and the positions of the linescanners and point sensors. The software displays the resulting configuration and manages the temperature profile calculations.

Integrated Shadow Monitoring

Point sensors can be quickly configured to cover any shadow areas created by the tires or by physical obstructions such as buildings or utility poles. All sensors are configured from one screen and, since the software senses any conflicts and notifies the operator, set-up errors are virtually eliminated.

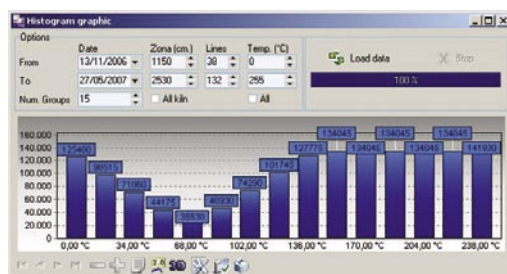
Kiln Shell Thermal Image

The CS200 provides a thermal image of the entire kiln shell surface, with a zoom function that allows detailed examination of areas of interest. Temperature range, color palettes and zone alarms are easily configured within the user-friendly software. Other useful information such as burning zone temperature, lap time and the scanner internal temperature is displayed in the status bar to provide a complete system status without changing screens.



Historical Data Analysis

Kiln shell temperature snapshots are taken at user-defined intervals and stored in both short-term and long-term databases for later review. Data can be viewed as thermograms, histograms or as line charts to monitor gradual refractory degradation or other changes.



Integrated Live Ring Migration

Proximity sensors measure the rotation of each tire and calculate the tire slip at each location. Results are calculated and displayed for each rotation as well as being stored for data analysis. Any deviation beyond user-defined limits results in immediate alarms.

CS200 System Accessories

Live Ring Migration (LRM)

LRM software is supplied with the CS200. The sensors and connection boxes required to activate the system can be purchased as an accessory. This system records tire slip and can be configured to generate alarms at user-defined limits. The LRM is fully integrated with the system software and is capable of extensive historical data analysis.

Fan Control

Fan control software is included with the CS200 to control up to 48 discrete zones. The optional fan control hardware allows the user to provide outputs to up to 16 fans per module.

Fiber-optic Installation Kit

The fiber-optic installation kit insures reliable serial communications in locations known to have severe electrical storms causing power spikes/surges/outages, or ground potential problems. The only difference in the fiber-optic installation compared to "all copper" is that two fiber-optic cables and two fiber-optic multiplexers replace copper wires. Otherwise, the fiber-optic installation is electrically the same.

Burning Zone Monitor Kit

When the optional Burning Zone Monitor Kit is installed operators can monitor the condition of the critical burning zone area directly on the CS200 software. Temperature is displayed alongside the kiln shell temperature and all data is recorded and date stamped for later analysis. The kit consists of a two-color ratio point sensor to "see through" the combustion gases, a protective housing and all of the hardware needed to complete the installation.

Shadow Monitoring Kit

The CS200 software can accommodate any Raytek point sensor to monitor areas of the kiln shadowed from the main linescanner. The data is seamlessly integrated into a single thermogram both for real-time display and for later data analysis. For convenience, the most commonly used sensor and all of the necessary accessories are provided as a kit.

CS200 System Details

Linescanner	CS200 linescanner (2 for CS202) <i>(includes all required cables and connectors)</i>
Protective Housing	Rugged Stainless Steel Housing (2 for CS202)
CS200 Interface	CS200 Interface Box Scanner Connection Box
Position Indicator	High-temperature kiln rotation sensor
Software	DataTemp CS200
Documentation	Documentation Binder with CS200 Operators Manual & MP50 Manual
Startup Service	On-site startup commissioning/training available

Specifications

Temperature range	100 to 650°C
Temperature resolution	1°C
Accuracy	± 2 % of reading
Spot detection (50% of energy)	300 : 1 (3.3 mradians or 0.19 degrees)
Temperature samples/scan	1024 (compressed into 256 points for display)
Scan rate	36 Hz
Scan motor	MTBF: 40,000 hours
Ambient operating temp.	-40 to 45°C (no direct sunlight)
Position indicator temp.	-25 to 230°C
Zone alarms	48 software, 3 hardware (PC independant)
Kiln rotation rate	Up to 10 rpm
LRM accessory	Supports up to 6 tires
Fan Control accessory	Supports up to 16 fans per module (48 total)
Burning Zone Accessory	MR1B Ratio Pyrometer 700 to 1800°C, connection box, 15 m high temp. cable, Thermojacket, blast gate, sighting tube, adj. pipe adapter, adj. mounting base, air flow/press. regulator
Shadow Monitor Accessory	MIH Sensor (-40 to 600°C) with 8 m high temp. cable, air purge jacket and adj. mounting base.

CS200 Part Numbers

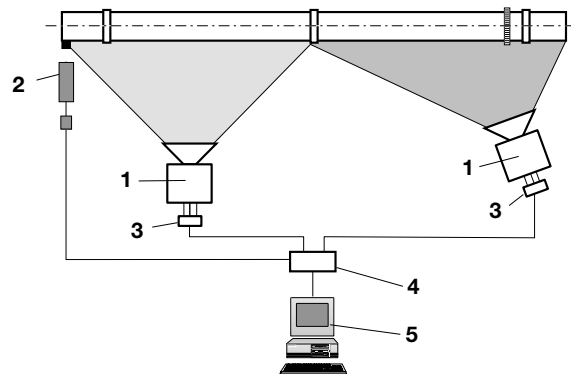
RAYTCS201	CS200 Kiln Shell Monitoring System
RAYTCS202	Dual scanner system for longer kilns
XXXCS200MIFBOX	Module Interface Box (req'd for accessories)
XXXTCSLRM200	Live Ring Migration (LRM) Hardware Kit
XXXTCSFC200	Fan Control Digital Output Module
XXXTCS200BZ	Burning Zone Monitor Kit
XXXTCS200SM	Shadow Monitor Kit
XXXACFIK	Fiber-optic Installation Kit
SYSENCVT	Vortex Cooling Kit
XXXCS200UPGRADE1	Basic software upgrade from CS100 (requires CS200 interface box)
XXXSYSCS200IF	CS200 Interface Box

Easy Installation & Maintenance

The MP50 linescanner (1) is installed to view the desired portion of the kiln. The Position Indicator (2) is a high-temperature inductive sensor that synchronizes thermal imaging with kiln rotation. The Connection Box (3) provides for local cable/wire termination. The Interface Box (4) connects the scanner to the PC (5) and contains RS485/RS232 data conversion and the scanner(s) power supply. The scanner communicates to a PC via RS485 for distances up to 1000 meters.

CS200 System components are easy to install and are field-replaceable. When installing two linescanners, they may each mount at different angles so that each has a clear view of the kiln shell. CS200 software combines the data from each scanner providing a single thermal image for display and analysis.

The CS200 System installs in a standard PC (local operating system) without need to add expansion cards or open the computer.



Raytek Automation Products: Thermal Imaging System for Kiln Shell Temperature Monitoring

Worldwide Headquarters

Raytek Corporation
1201 Shaffer Rd., Bldg. 2
Santa Cruz, CA 95060-5731 USA
Tel: 1 800 227 8074 (USA/Canada, only)
1 831 458 1110
Fax: 1 831 458 1239
solutions@raytek.com

Raytek China Company
info@raytek.com.cn

European Headquarters

Raytek GmbH
Berlin, Germany
Tel: 49 30 4 78 00 80
Fax: 49 30 4 71 02 51
raytek@raytek.de

France
info@raytek.france

United Kingdom
ukinfo@raytek.com



www.raytek.com
for up-to-the-minute features

TSISystem
www.tsisystem.cz

Raytek[®]
A Fluke Company

© 2007 Raytek (55002 A4 Rev. D) 02/2007

Raytek and the Raytek logo are registered trademarks of Raytek Corporation.
Windows NT, Windows 2000, Windows XP are registered trademarks of Microsoft Corporation.
Specifications subject to change without notice. Raytek is ISO 9001 certified.