

PosiTector® Inspection Kits



KITF3 Shown

Each Inspection Kit contains:

- PosiTector Gage Body – Standard or Advanced
- PosiTector 6000 Coating Thickness Probe – select from a variety of measurement ranges and probe styles
- PosiTector DPM Environmental Probe
- PosiTector SPG Surface Profile Probe

Customize your own from our wide selection of gage bodies and probes



DeFelsko®
The Measure of Quality



PosiTector®
SmartLink™
Compatible

Select Standard or Advanced Features

for a complete comparison visit www.defelsko.com/kits

PosiTector body accepts all PosiTector 6000, 200, DPM, IRT, RTR, SPG, SST, SHD, BHI, and UTG probes easily converting from a coating thickness gage to a dew point meter, surface profile gage, soluble salt tester, hardness tester, or ultrasonic wall thickness gage.

Standard Model Inspection Kits

Each Standard Kit contains a **PosiTector Standard** gage body and 3 probes—coating thickness, environmental, and surface profile.

Coating Thickness measurement with Standard models

- **NEW** Storage of 1,000 readings per probe—stored readings can be viewed or downloaded

Environmental Monitoring with Standard models

- Storage of 2,500 datasets per probe—stored readings can be viewed or downloaded.
- Auto Log Mode runs unattended on batteries for up to 60 hours or continuously via USB

Surface Profile measurement with Standard Models

- **NEW** Storage of 1,000 readings per probe—stored readings can be viewed or downloaded

Advanced Model Inspection Kits

Each Advanced Kit contains a **PosiTector Advanced** gage body and 3 probes—coating thickness, environmental, and surface profile.

Features include:

- **NEW** Touchscreen keyboard for renaming batches, adding notes, and more
- Live graphing of measurement data
- WiFi technology wirelessly synchronizes with PosiSoft.net and downloads software updates
- **Bluetooth® 4.0 Technology** for data transfer to a mobile device running the PosiTector App or optional portable printer. **BLE API** available for integration into third-party software.

Coating Thickness measurement with Advanced models

- **NEW** Storage of 250,000 readings from multiple probes in up to 1,000 batches and sub-batches
- **NEW** Prompted Batch Mode—create pre-defined batches with on-screen text and image prompts for each reading
- **3 Scan Modes**—increase measurement speed to 180+ readings per minute
 - **Normal** – take continuous readings without lifting the probe
 - **Statistics** – take continuous readings and record average, standard deviation, min/max thickness and number of readings while scanning
 - **Limited Count Average** – take continuous readings up to a user-specified count. The gage displays and records the average of the readings.
- **NEW** SSPC-PA 2, ISO 19840, and IMO PSCP 90:10 features determine if film thickness over a large area conforms to user-specified min/max levels

Environmental Monitoring with Advanced models

- **NEW** Storage of 250,000 datasets from multiple probes in up to 1,000 batches
- Enhanced Auto Log mode turns the gage off between readings for up to 8 months of battery life. Each reading can be uploaded to PosiSoft.net or an FTP server using WiFi. Automatically group readings into batches at daily, weekly, or monthly intervals
- User defined alarms for all parameters—visible and audible warnings. Receive email alerts when connected to WiFi
- Trend Charts graph readings in real-time

Surface Profile measurement with Advanced models

- **NEW** Storage of 250,000 readings from multiple probes in up to 1,000 batches and sub-batches
- SmartBatch™ allows entry of user-defined parameters and criteria to comply with standards such as ASTM D4417 and SSPC PA-17



KITF3 Shown

Each pre-configured inspection kit contains

- PosiTector Gage Body – Standard or Advanced
- PosiTector 6000 Coating Thickness Probe—select from a variety of measurement ranges and probe styles
- PosiTector DPM Environmental Probe
- PosiTector SPG Surface Profile Probe

Ordering Guide

Inspection Kit	PosiTector Body	Coating Thickness Probe
KITF1	Standard	6000-F
KITFS1		6000-FS
KITFT1		6000-FT
KITFTS1		6000-FTS
KITFN1		6000-FN
KITFNS1		6000-FNS
KITF3	Advanced	6000-F
KITFS3		6000-FS
KITFT3		6000-FT
KITFTS3		6000-FTS
KITFN3		6000-FN
KITFNS3		6000-FNS

Kits come complete with a gage body (Standard or Advanced), coating thickness probe (user selected), environmental probe, surface profile probe, precision plastic shims, glass zero plate and metal shim, protective rubber holster, wrist strap, 3 AAA alkaline batteries, 3 instruction manuals, hard shell case, protective lens shield, 3 Long Form Certificates of Calibration traceable to NIST, USB cable, and 2 year warranty on gage body and probes.

Case Size: 30 cm (l) x 25 cm (w) x 10 cm (d) **Weight:** 1.2 kg (2.6 lbs.)
12" (l) x 10" (w) x 4" (d)

Custom Inspection Kits

Build your own Inspection Kit from a selection of gage bodies and probes to suit your needs.

- Coating Thickness
- Surface Profile
- Environmental Conditions
- Hardness
- Salt Contamination
- Ultrasonic Wall Thickness



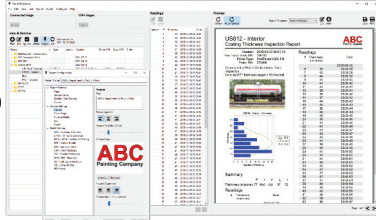
PosiSoft® Suite of Software

Powerful ways to view and report your PosiTector and PosiTest data

PosiSoft Desktop — PC/Mac

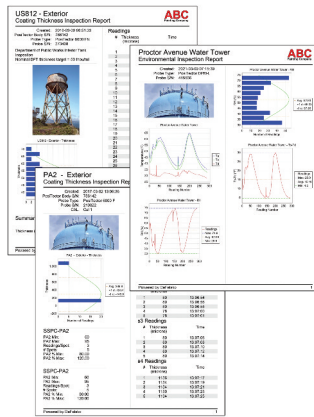
Powerful desktop software for downloading, archiving, and reporting measurement data.

- Import readings directly from the gage via USB, WiFi, or legacy PosiSoft Desktop versions
- **Jobs feature** consolidates batches into groups to keep measurement data organized and to quickly create multi-batch reports
- Fully integrates with PosiSoft.net—backup and synchronize jobs, batches, readings, and report templates to the cloud (see inset at right)
- Export readings as .csv (comma separated value) files for easy import into Excel and other spreadsheets



Professional, Custom Reports

- Compile single or multi-batch reports from multiple probes and instrument types
- Add pictures, screen captures, notes, and more with an onscreen live preview
- Instantly create professional reports from pre-formatted report templates
- Design custom layouts and templates—add custom cover pages and logos, and choose to display charts, histograms, and/or individual readings
- Drag-and-drop Custom Fields mode—import PDF forms and overlay fields to automatically populate inspection data

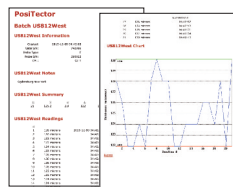


Prompted Batch Mode

Create pre-defined batches with onscreen text and image prompts for each reading and upload to PosiTector 6000, 200, and UTG gages (*Advanced models only*).

- Ideal for ensuring a consistent measurement pattern for repetitive jobs or when specific measurement locations are required

PosiSoft USB Drive — Gage based



A simple gage interface to retrieve data in a manner similar to USB flash drives or cameras. No software to install or internet connection required. Measurement data can be printed quickly from a formatted HTML report or exported in .csv format for further analysis in spreadsheets.

PosiTector App — iOS/Android

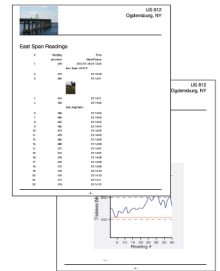
Fully-featured mobile app that connects to the PosiTector SmartLink, PosiTector Advanced gages, and the PosiTest AT-A.

- Auto pairing Bluetooth BLE connection
- Add images and notes to individual readings or batches directly from your device
- Email readings as .csv (comma separated value) files for easy import to Excel and other spreadsheets.
- Synchronize readings with PosiSoft.net—backup and synchronize jobs, batches, and readings to the cloud (see inset below)



Mobile Reporting Solution

- Compile single or multi-batch reports from multiple probes and instrument types
- Add pictures, screen captures, notes, and more
- Email pre-formatted or custom reports from your device instantly



PosiSoft.net

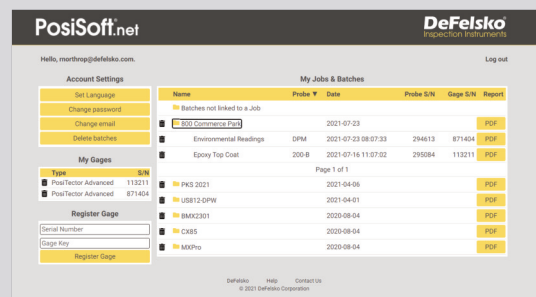
Secure storage of measurement data in the cloud.

compatible with PosiSoft Desktop and PosiTector App

- Upload measurement data directly from WiFi-connected PosiTector Advanced gages from anywhere in the world—no software required
- Synchronize and share measurement data across multiple computers

Ideal for...

- Users with multiple computers, instruments, and office locations
- Inspection companies managing data from multiple inspectors
- Login from PosiSoft Desktop to synchronize all measurement data and stored report templates from your account



PosiSoft.net Web Viewer Review measurement data and print simple, pre-formatted PDF reports from any web browser—no software installation required.

PosiTector Developer Resources

- Bluetooth 4.0
- WiFi
- Keyboard Mode
- USB Serial

PosiTector and PosiTest AT-A instruments can integrate with third-party software, drones, ROVs, PLCs, and robotic devices using several industry-standard communication protocols including: Bluetooth 4.0, WiFi, Keyboard mode, and USB serial.



© DeFelsko Corporation USA 2021. All Rights Reserved. Technical Data subject to change without notice. • Printed in USA • PSoft.v.LW/W2110

DeFelsko
Inspection Instruments

DeFelsko Corporation • 800 Proctor Ave. • Ogdensburg, New York 13669-2205 USA
Toll Free 1-800-448-3835 • Tel: +1-315-393-4450
techsale@defelsko.com • www.defelsko.com

Made in U.S.A.