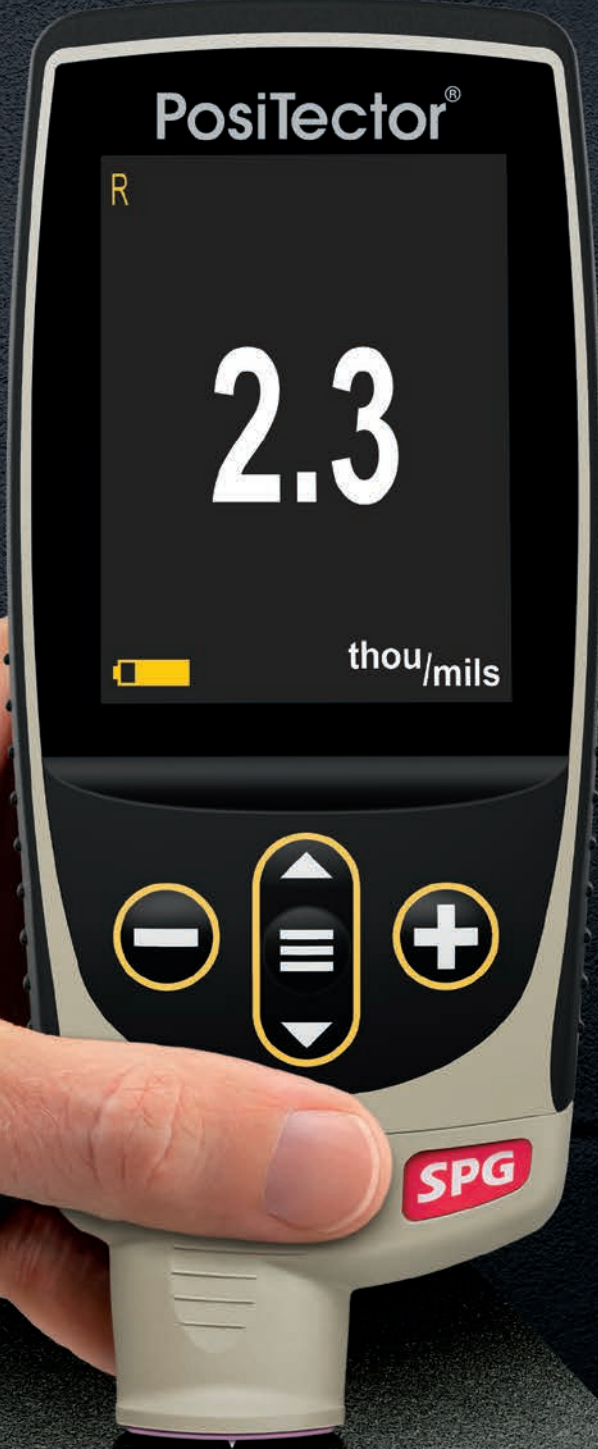


# PosiTector® *SPG* Series

Surface Profile Gages for blasted steel,  
textured coatings and concrete



*PosiTector SPG OS* surface profile  
probe for outside diameters

**TSI**System

Mariánské náměstí 1 617 00 Brno Česko  
+420 545 129 462 info@tsisystem.cz  
[www.tsisystem.cz](http://www.tsisystem.cz)

**DeFelsko**®  
The Measure of Quality



Available on the  
App Store



PosiTector®  
**SmartLink**™  
Compatible

**Bluetooth**®

# PosiTector® *SPG* Series

## All Gages Feature...

### Simple

- Fast measurement rate of over 50 readings per minute—ideal for quickly and accurately measuring large surface areas
- **NEW** Larger 2.8" impact resistant color touchscreen with redesigned keypad for quick menu navigation
- **NEW** On-gage help explains menu items at the touch of a button
- RESET feature instantly restores factory settings

### Durable

- Alumina wear face and tungsten carbide tip for long life and continuous accuracy—field replaceable tips
- **NEW** Weatherproof, dustproof, and water-resistant—IP65-rated enclosure
- **NEW** Ergonomic design with durable rubberized grip
- Rugged, indoor/outdoor instrument—ideal for field or shop use
- Shock-absorbing protective rubber holster for added impact resistance
- Two year warranty on gage body AND probe

### Accurate

- Certificate of Calibration showing traceability to PTB included
- Built-in temperature compensation ensures measurement accuracy
- Glass zero plate and metal shim included
- Conforms to national and international standards including ASTM

### Versatile

- PosiTector body accepts all PosiTector SPG, RTR, 6000, 200, DPM, IRT, SST, SHD, BHI, and UTG probes easily converting from a surface profile gage to a coating thickness gage, dew point meter, soluble salt tester, hardness tester, or ultrasonic wall thickness gage
- Cabled probes available for blasted steel, textured coatings, and concrete profile
- **NEW** Auto rotating display with Flip Lock

### Powerful

- Continually displays/updates average, standard deviation, min/max, and number of readings while measuring
- **NEW** Screen Capture—save 100 screen images for record keeping and review
- HiLo alarm audibly and visibly alerts when measurements exceed user-specified limits
- **NEW** Instant-on feature quickly powers up the gage if recently powered down
- **NEW** Up to 30% longer battery life
- USB port for fast, simple connection to a PC and to supply continuous power. USB cable included.
- PosiSoft USB Drive—stored readings and graphs can be accessed using universal PC/Mac web browsers or file explorers. No software required.
- Every stored measurement is date and time stamped
- Includes PosiSoft suite of software for viewing and reporting data

## PosiSoft® ... **FREE SOLUTIONS** for viewing, analyzing and reporting data:



### PosiSoft Desktop

Powerful desktop software for downloading, viewing, printing, and storing measurement data. Includes customizable, templated PDF Report Generator. No internet connection required.

### Standard Models

**Includes ALL features as shown on left plus...**

- **NEW** Storage of 1,000 readings per probe—stored readings can be viewed or downloaded

### Advanced Models

**Includes ALL features as shown on left plus...**

- **NEW** Storage of 250,000 readings from multiple probes in up to 1,000 batches and sub-batches
- SmartBatch™ allows entry of user-defined parameters and criteria for quick statistical analysis to comply with standards such as ASTM D4417 and SSPC PA-17
- Live graphing of measurement data
- **NEW** Touchscreen keyboard for quickly renaming batches, adding notes, and more
- WiFi technology wirelessly synchronizes with PosiSoft.net and downloads software updates
- **Bluetooth 4.0 Technology** for data transfer to a mobile device running the PosiTector App or optional portable printer. **BLE API** available for integration into third-party software.

## PosiTector® *SmartLink*™ Compatible

- Wirelessly connect PosiTector SPG probes to your smart device
- Turns your cell phone or tablet into a virtual PosiTector gage
- Includes free mobile app



### PosiSoft.net

A web-based application offering secure, centralized management of readings. Includes customizable, templated PDF Report Generator. Access your data from any web-connected device.



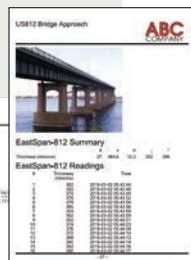
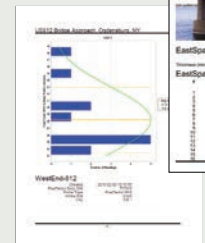
### PosiTector App

Mobile app connects PosiTector Advanced instruments, the PosiTector SmartLink and the PosiTest AT-A to your iOS or Android smart device.



### PosiSoft USB Drive

A simple gage interface to retrieve data in a manner similar to USB flash drives, cameras, or digital audio players. No software to install or internet connection required.



# Select from Five Models

## for Blasted Steel



PosiTector SPG  
with integral probe shown

Range	0–500 $\mu\text{m}$ 0–20 mils	
	Accuracy	
Accuracy		$\pm(5 \mu\text{m} + 5\%)$ $\pm(0.2 \text{ mils} + 5\%)$
Tip	Angle	60°*
	Radius	50 $\mu\text{m}$ (2 mils)

\*30° tips available for conformance to Australian standard AS 3894.5-C

Ideal for measuring the surface profile of steel cleaned by abrasive blast

### Integral Probe – SPG

Integral probe ideal for one-handed operation

### Cabled Probe – SPG S

Probe mounted on a 1m/3ft cable for enhanced ergonomics and access to hard-to-reach areas



### Cabled Probe for Convex Surfaces – SPG OS

Probe mounted on a 1m/3ft cable with a V-groove sleeve ideal for measuring convex surfaces such as tanks and pipes

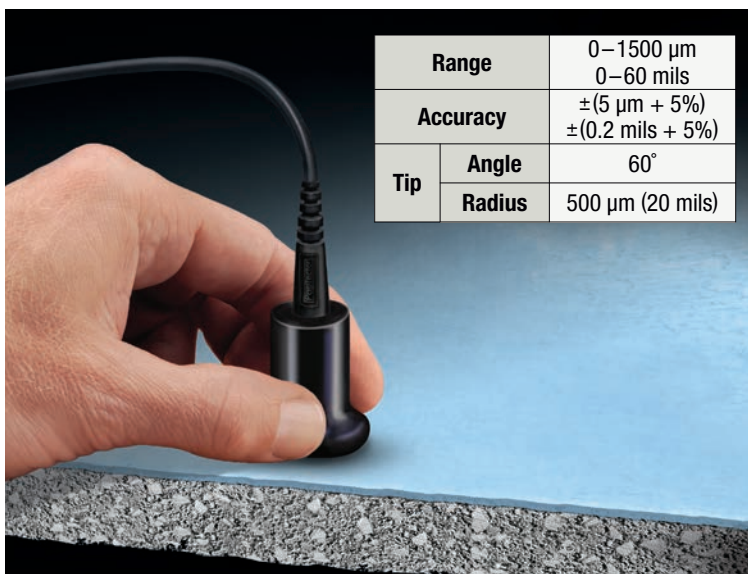
- Ideal for measuring on flat and curved surfaces with an OD greater than 3mm (0.125")
- Proprietary OD Mode analyzes multiple measurements for greater accuracy on convex surfaces
- Normal Mode is ideal for flat surfaces, and operates similarly to the PosiTector SPG and SPGS probes
- Self-leveling probe foot ensures perpendicularity to the part being measured
- Uses the proven V-groove design found on PosiTector 6000 coating thickness probes to stabilize the probe on any diameter
- Available Large V-groove Adaptor for enhanced stability on 30-45cm (12-18") OD pipes



## for Textured Coatings

### Cabled Probe for Textured Coatings – SPG CS

Ideal for measuring the surface profile of textured coatings and other surface profile applications

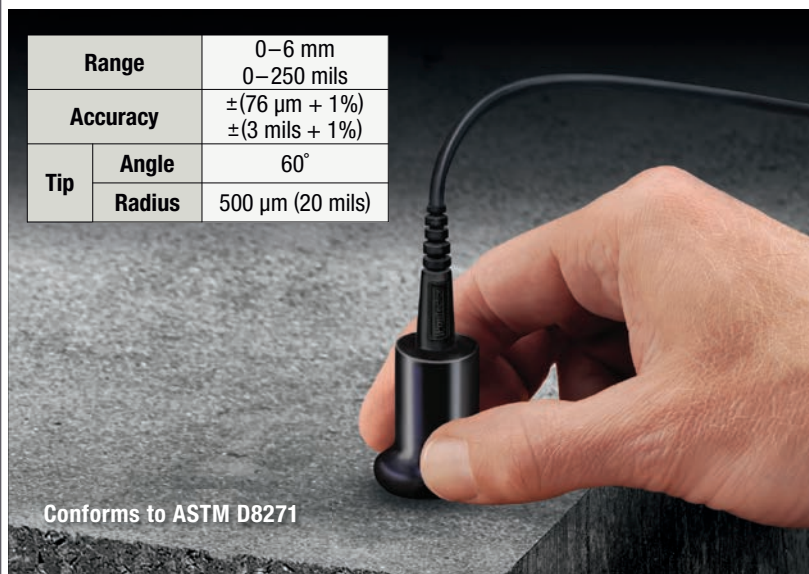


Range	0–1500 $\mu\text{m}$ 0–60 mils	
	Accuracy	
Accuracy		$\pm(5 \mu\text{m} + 5\%)$ $\pm(0.2 \text{ mils} + 5\%)$
Tip	Angle	60°
	Radius	500 $\mu\text{m}$ (20 mils)

## for Concrete Profile

### Cabled Probe for Concrete Profile – SPG TS

Ideal for measuring the surface profile of concrete created by blasting, scarifying, grinding, acid etching and more



Range	0–6 mm 0–250 mils	
	Accuracy	
Accuracy		$\pm(76 \mu\text{m} + 1\%)$ $\pm(3 \text{ mils} + 1\%)$
Tip	Angle	60°
	Radius	500 $\mu\text{m}$ (20 mils)

Conforms to ASTM D8271

## Rugged Features...

Sealed USB Port for communicating with a PC or Mac

Weatherproof, dustproof, and shockproof



2.8" impact resistant color touchscreen display

Auto rotating display with Flip Lock and on-screen help

Ergonomic design with durable rubberized grip

Redesigned keypad for quick navigation

Sealed connector protects probe from water and dust intrusion

Alumina wear face and tungsten carbide tip for long life and continuous accuracy

All probes feature a durable Alumina wear face and tungsten carbide tip for long life and continuous accuracy. Cabled (SPG S) probe shown.



**Integral Probe shown**



**All Gages Come Complete** with glass zero plate, metal check shim, protective rubber holster, wrist strap, 3 AAA alkaline batteries, instructions, nylon carrying case with shoulder strap, protective lens shield, Long Form Certificate of Calibration traceable to PTB, USB cable, PosiSoft Software, two (2) year warranty on body and probe.



**\*SIZE:** 127 x 66 x 25.4 mm (5" x 2.6" x 1")

**\*WEIGHT:** 137 g (4.9 oz.) without batteries

*\* Size and weight are for the PosiTector gage body only and do not include the probe.*

Conforms to ASTM D4417-B, ASTM D8271 (SPG TS only), AS 3894.5-C (with optional 30° tip), U.S. Navy NSI 009-32, SANS 5772 and others

## Ordering Guide

Application	Blasted Steel	Convex Surfaces	Textured Coatings	Concrete Surface Profile	
Probe Type	Integral	Cabled			
Standard	SPG 1	SPG S1	SPG OS1	SPG CS1	SPG TS1
Advanced	SPG 3	SPG S3	SPG OS3	SPG CS3	SPG TS3
Probe Only	PRBSPG	PRBSPGS	PRBSPGOS	PRBSPGCS	PRBSPGTS

## Options

### Certified SPG Standards

to verify the accuracy and operation of surface profile depth micrometers — an important component in fulfilling both ISO and in-house quality control requirements.

- Ideal for use in calibration labs
- Standards consist of 4 sapphire test plates mounted in a precision ground steel base and supplied in a hard shell case
- Sapphire test plates are individually serialized for traceability to PTB — includes a Certificate of Calibration
- Certified and labeled in both Metric and Imperial units



Order Code	Approximate Depth				Accuracy
	Plate 1	Plate 2	Plate 3	Plate 4	
STDSPG	0	50 µm (2 mils)	175 µm (7 mils)	500 µm (20 mils)	± 1.25 µm (± 0.05 mils)

**COMES COMPLETE** with a precision ground steel base, 4 sapphire test plates, sample certificate of accuracy, hard shell carrying case, and a Certificate of Calibration traceable to PTB.

### PosiTector Probes

PosiTector body accepts all PosiTector SPG, RTR, 6000, 200, DPM, IRT, SST, SHD, BHI, and UTG probes easily converting from a surface profile gage to a coating thickness gage, dew point meter, soluble salt tester, hardness tester, or ultrasonic wall thickness gage



### Large V-groove Adaptor

for enhanced stability on 30-45cm (12-18") OD pipes (for SPG OS only)

### Replacement Non-Certified Metal Check Shim and Glass Zero Plate

provides a quick accuracy check of the instrument and allows the user to perform practice measurements

### Replacement Tungsten Carbide Probe Tips

two angles available — 60° or 30°, field replaceable

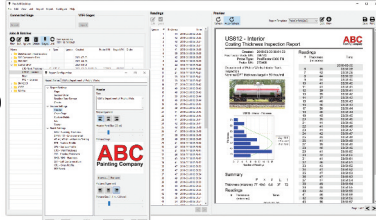
# PosiSoft® Suite of Software

Powerful ways to view and report your PosiTector and PosiTest data

## PosiSoft Desktop — PC/Mac

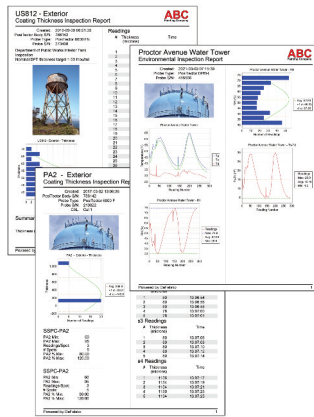
Powerful desktop software for downloading, archiving, and reporting measurement data.

- Import readings directly from the gage via USB, WiFi, or legacy PosiSoft Desktop versions
- **Jobs feature** consolidates batches into groups to keep measurement data organized and to quickly create multi-batch reports
- Fully integrates with PosiSoft.net—backup and synchronize jobs, batches, readings, and report templates to the cloud (see inset at right)
- Export readings as .csv (comma separated value) files for easy import into Excel and other spreadsheets



## Professional, Custom Reports

- Compile single or multi-batch reports from multiple probes and instrument types
- Add pictures, screen captures, notes, and more with an onscreen live preview
- Instantly create professional reports from pre-formatted report templates
- Design custom layouts and templates—add custom cover pages and logos, and choose to display charts, histograms, and/or individual readings
- Drag-and-drop Custom Fields mode—import PDF forms and overlay fields to automatically populate inspection data

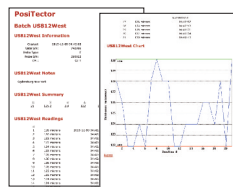


## Prompted Batch Mode

Create pre-defined batches with onscreen text and image prompts for each reading and upload to PosiTector 6000, 200, and UTG gages (*Advanced models only*).

- Ideal for ensuring a consistent measurement pattern for repetitive jobs or when specific measurement locations are required

## PosiSoft USB Drive — Gage based



A simple gage interface to retrieve data in a manner similar to USB flash drives or cameras. No software to install or internet connection required. Measurement data can be printed quickly from a formatted HTML report or exported in .csv format for further analysis in spreadsheets.

## PosiTector App — iOS/Android

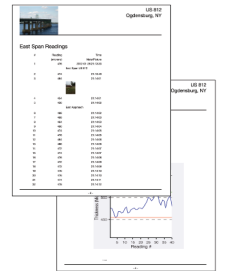
Fully-featured mobile app that connects to the PosiTector SmartLink, PosiTector Advanced gages, and the PosiTest AT-A.

- Auto pairing Bluetooth BLE connection
- Add images and notes to individual readings or batches directly from your device
- Email readings as .csv (comma separated value) files for easy import to Excel and other spreadsheets.
- Synchronize readings with PosiSoft.net—backup and synchronize jobs, batches, and readings to the cloud (see inset below)



## Mobile Reporting Solution

- Compile single or multi-batch reports from multiple probes and instrument types
- Add pictures, screen captures, notes, and more
- Email pre-formatted or custom reports from your device instantly



## PosiSoft.net

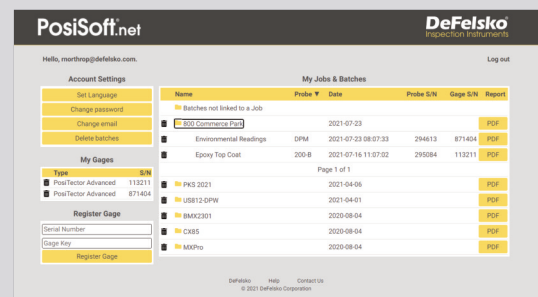
Secure storage of measurement data in the cloud.

compatible with PosiSoft Desktop and PosiTector App

- Upload measurement data directly from WiFi-connected PosiTector Advanced gages from anywhere in the world—no software required
- Synchronize and share measurement data across multiple computers

### Ideal for...

- Users with multiple computers, instruments, and office locations
- Inspection companies managing data from multiple inspectors
- Login from PosiSoft Desktop to synchronize all measurement data and stored report templates from your account



**PosiSoft.net Web Viewer** Review measurement data and print simple, pre-formatted PDF reports from any web browser—no software installation required.

## PosiTector Developer Resources

- Bluetooth 4.0
- WiFi
- Keyboard Mode
- USB Serial

PosiTector and PosiTest AT-A instruments can integrate with third-party software, drones, ROVs, PLCs, and robotic devices using several industry-standard communication protocols including: Bluetooth 4.0, WiFi, Keyboard mode, and USB serial.

