

PosiTest[®] CMM

Concrete Moisture Meter

Non-destructively measures the moisture content of concrete in accordance with ASTM F2659

Conforms to

ASTM F2659

Standard Test Method for Preliminary Evaluation of Comparative Moisture Condition of Concrete, Gypsum Cement, and Other Floor Slabs and Screeds Using a Non-Destructive Electronic Moisture Meter



Ergonomically measure without bending or kneeling with the optional Telescopic Extender

TSI System

Mariánské náměstí 1 617 00 Brno Česko
+420 545 129 462 info@tsisystem.cz
www.tsisystem.cz

DeFelsko[®]
The Measure of Quality

PosiTest[®] CMM

Concrete Moisture Meter

Non-destructively measures the moisture content of concrete in accordance with ASTM F2659

Features...

Simple

- Easily collect and report measurements
- Ergonomic and lightweight design with durable rubberized grip for comfortable all day inspection
- Easy-to-read digital display takes the guesswork out of analog scales
- Instant measurements with no drilling required

Durable

- Weatherproof, dustproof, and water-resistant—IP65-rated enclosure
- Nylon carrying case with shoulder strap included
- Two year warranty

Accurate

- Conforms to ASTM F2659
- Fast response precision sensors provide instant readings
- Spring loaded sensor pins provide enhanced contact on uneven concrete
- Includes Check Standard to verify operation
- Calibrated with concrete standards measured gravimetrically. Test Certificate included.

Versatile

- Three measurement modes:
 - **Continuous Mode** constantly updates the display
 - **Hold Max Mode** displays the maximum reading until saved or reset
 - **Hold Max and Save Mode** waits for the reading to stabilize, then automatically saves it into memory
- Three available measurement scales:
 - Moisture Content of Concrete
 - Carbide Method Equivalent
 - Relative
- Built-in 1/4"-20 threaded mounting point for the optional *Telescopic Extender*

Powerful

- Storage of 200 readings—stored readings can be viewed or downloaded
- Includes free PosiSoft Desktop software for analyzing and reporting data
- USB port for fast, simple connection to a PC or Mac
- Automatically generate custom, professional PDF reports



Easily verify meter operation using the included Check Standard

Specifications

Measurement Scales	0 to 6% Moisture Content of Concrete* 0 to 4% Carbide Method Equivalent 0 to 100 Relative
Accuracy	± 0.5% Moisture Content of Concrete
Depth of Penetration	~20 mm ~0.75"
Temperature Range	5° C to 40° C 40° F to 105° F
IP Rating	65 (dust and water jet resistance)
Memory	200 readings
Power	2 AAA Alkaline Batteries

* This scale is calibrated using the gravimetric method (percentage of dry weight).



METER COMES COMPLETE with 2 AAA batteries, instructions, protective rubber cap, Check Standard, Test Certificate, USB cable, nylon carrying case with shoulder strap, two (2) year warranty

Size: 89 x 152 x 38 mm (3.5" x 6" x 1.5")

Weight: 295 g (0.65 lbs.) without batteries

Ordering Guide

PosiTest CMM	CMM
--------------	-----

Conforms to ASTM F2659

Option

Telescopic Extender (CMMEXT)

Mounts to the convenient and secure 1/4"-20 threaded mounting point allowing for quick measurements while eliminating the need to bend or kneel.



PosiTest[®] CMM

Product Video

Scan the QR Code to watch the 6-minute video

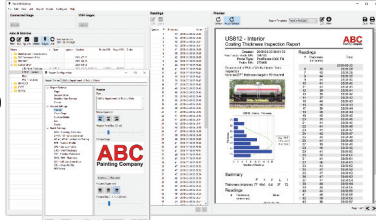
PosiSoft® Suite of Software

Powerful ways to view and report your PosiTector and PosiTest data

PosiSoft Desktop — PC/Mac

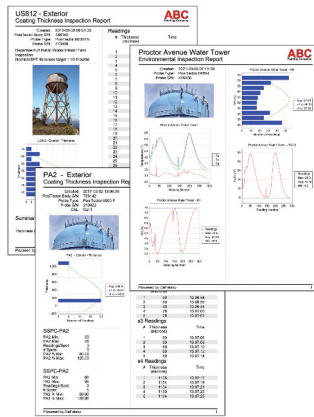
Powerful desktop software for downloading, archiving, and reporting measurement data.

- Import readings directly from the gage via USB, WiFi, or legacy PosiSoft Desktop versions
- **Jobs feature** consolidates batches into groups to keep measurement data organized and to quickly create multi-batch reports
- Fully integrates with PosiSoft.net—backup and synchronize jobs, batches, readings, and report templates to the cloud (see inset at right)
- Export readings as .csv (comma separated value) files for easy import into Excel and other spreadsheets



Professional, Custom Reports

- Compile single or multi-batch reports from multiple probes and instrument types
- Add pictures, screen captures, notes, and more with an onscreen live preview
- Instantly create professional reports from pre-formatted report templates
- Design custom layouts and templates—add custom cover pages and logos, and choose to display charts, histograms, and/or individual readings
- Drag-and-drop Custom Fields mode—import PDF forms and overlay fields to automatically populate inspection data

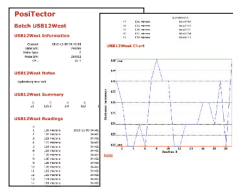


Prompted Batch Mode

Create pre-defined batches with onscreen text and image prompts for each reading and upload to PosiTector 6000, 200, and UTG gages (*Advanced models only*).

- Ideal for ensuring a consistent measurement pattern for repetitive jobs or when specific measurement locations are required

PosiSoft USB Drive — Gage based



A simple gage interface to retrieve data in a manner similar to USB flash drives or cameras. No software to install or internet connection required. Measurement data can be printed quickly from a formatted HTML report or exported in .csv format for further analysis in spreadsheets.

PosiTector App — iOS/Android

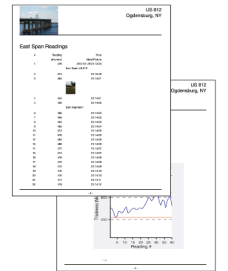
Fully-featured mobile app that connects to the PosiTector SmartLink, PosiTector Advanced gages, and the PosiTest AT-A.

- Auto pairing Bluetooth BLE connection
- Add images and notes to individual readings or batches directly from your device
- Email readings as .csv (comma separated value) files for easy import to Excel and other spreadsheets.
- Synchronize readings with PosiSoft.net—backup and synchronize jobs, batches, and readings to the cloud (see inset below)



Mobile Reporting Solution

- Compile single or multi-batch reports from multiple probes and instrument types
- Add pictures, screen captures, notes, and more
- Email pre-formatted or custom reports from your device instantly



PosiSoft.net

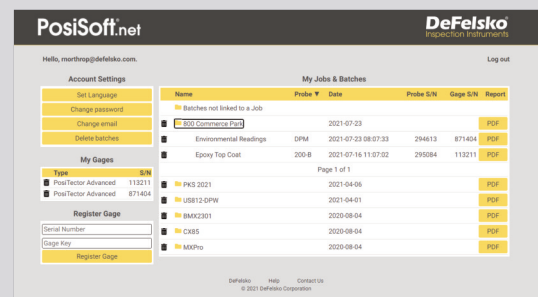
Secure storage of measurement data in the cloud.

compatible with PosiSoft Desktop and PosiTector App

- Upload measurement data directly from WiFi-connected PosiTector Advanced gages from anywhere in the world—no software required
- Synchronize and share measurement data across multiple computers

Ideal for...

- Users with multiple computers, instruments, and office locations
- Inspection companies managing data from multiple inspectors
- Login from PosiSoft Desktop to synchronize all measurement data and stored report templates from your account



PosiSoft.net Web Viewer Review measurement data and print simple, pre-formatted PDF reports from any web browser—no software installation required.

PosiTector Developer Resources

- Bluetooth 4.0
- WiFi
- Keyboard Mode
- USB Serial

PosiTector and PosiTest AT-A instruments can integrate with third-party software, drones, ROVs, PLCs, and robotic devices using several industry-standard communication protocols including: Bluetooth 4.0, WiFi, Keyboard mode, and USB serial.

